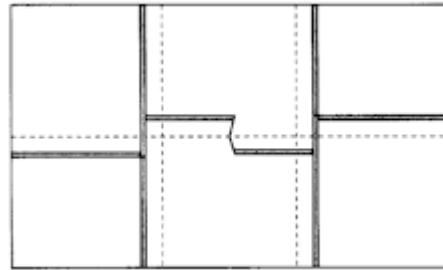


NOT ONLY, BUT ALSO CHRISTMAS

Final Installment

Before we get into this stage, here is a technique that is used a couple of times during the joining of the blocks and borders for this quilt. The Clip and Flip method is used when joining units that would otherwise have their seam allowances laying in the same direction which would create unnecessary bulk. When "clipping", be careful not to go too close the stitching line.



Now we're going to finish constructing the blocks that you need to make up your quilt top. You have already used the construction method for the following blocks in Stage Four with a slight twist - you're going to use the already completed star blocks as the centre for the larger stars.

Take your Gold and Green star block constructed in Stage Three and use that for the centre unit of this star along with four $6\frac{1}{2}$ " x $3\frac{1}{2}$ " cream rectangles, eight $3\frac{1}{2}$ " x $3\frac{1}{2}$ " red squares and four $3\frac{1}{2}$ " x $3\frac{1}{2}$ " cream squares.

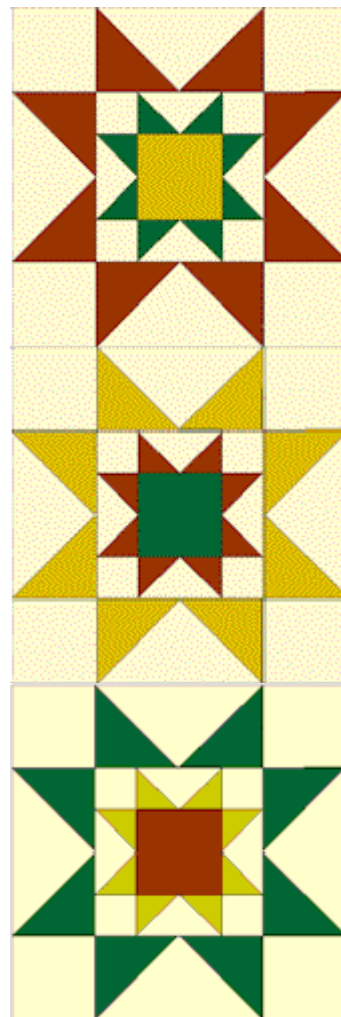
You need to complete **ONE** of these blocks.

Take your Green and Red star blocks constructed in Stage Three and use these for the centre units of these stars along with four $6\frac{1}{2}$ " x $3\frac{1}{2}$ " cream rectangles, eight $3\frac{1}{2}$ " x $3\frac{1}{2}$ " gold squares and four $3\frac{1}{2}$ " x $3\frac{1}{2}$ " cream squares per block.

You need to complete **TWO** of these.

Take your Red and Gold star blocks constructed in Stage Three and use these for the centre units of these stars along with four $6\frac{1}{2}$ " x $3\frac{1}{2}$ " cream rectangles, eight $3\frac{1}{2}$ " x $3\frac{1}{2}$ " green squares and four $3\frac{1}{2}$ " x $3\frac{1}{2}$ " cream squares per block.

You need to complete **TWO** of these.



Now you need to take five of the half square triangle units that you made back in Stage Three and join them to the "odd" nine patch units that you completed in Stage Two. Let the seams in your nine patch unit dictate to you the pressing direction for the joining of your half square triangle units.

You need to complete **FOUR** of these units

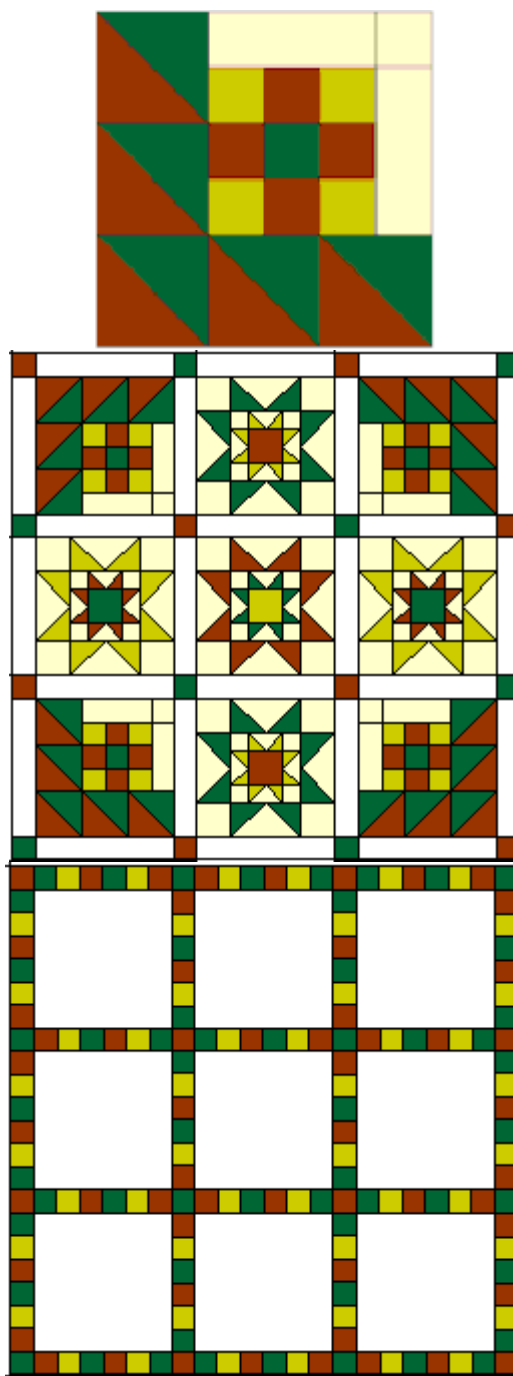
Your block layout is shown opposite. Using the remaining red and green $2\frac{1}{2}$ " squares place these at the intersections of the blocks and then lay your sashing sections as **shown below**. Wherever you have a red $2\frac{1}{2}$ " square at a junction rotate your sashing sections so that green ends butt up against it and visa versa for the green intersections - butt red ends to them.

DON'T JOIN at this stage until you read the next instruction.

Here is a further example of the sashing layout. It is recommended that you arrange on the floor or on your design wall and check and recheck that you have all your sashings rotated correctly.

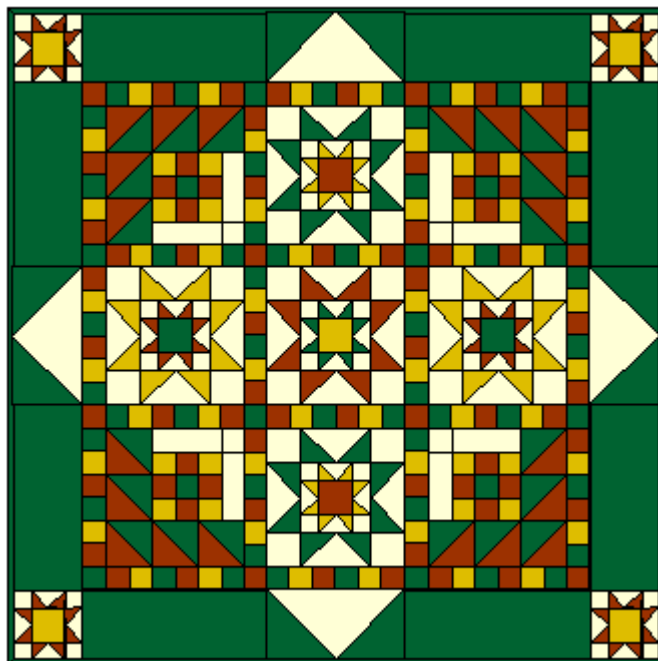
As none of the sashing seams butt against any of the star seams it is probably easier to join the sashings to the corner blocks first and to change the ironing directions of some of the sashing sections where they did butt up against seams in these corner blocks. Do one block at a time after you have laid the whole quilt on the floor - the sashing layouts are not all the same!

Once you've completed all corner sections then you need to join the sashing sections to the tops, bottoms or sides of the star blocks - Do one at a time so as not to mix up your sashing order and place them back carefully and check "the big picture" every time to make sure you haven't wrongly rotated one of your blocks.



Now take two of those enormous flying geese units that you made and join the 16½" x 6½" Green pieces to either side. Attach these to the top and bottom of your quilt before you do the same to both sides adding the remaining star blocks for the corner posts.

Once your top has been completed then layer and quilt and use the final green strips for binding fabric.



Well folks, this is what you've been stitching so hard to achieve.
Hope you like it.

The following are some finished examples.

